



DECOMPOSURE
the new work of **NATE SZARMACH**

a **CANVAS** solo exhibition
inquiries: info@canvasatx.com
1601 e. cesar chavez unit 101
austin, tx 78702
 [@canvasatx](https://www.instagram.com/canvasatx)





NATE SZARMACH

Posturing; A Study On Caravaggio II, 2022

Acrylic, gesso, Oil, pigment, Dye, Varnish, Oil pastel, Colored pencil, graphite, Galkyde, Liquin Gel, Cold press wax.

45 x 36 "



NATE SZARMACH

Cornerstone, 2022

Acrylic, gesso, Oil, pigment, Dye, Varnish, Oil pastel, Colored pencil, graphite, Galkyde, Liquin Gel, Cold press wax.

25 x 20 "



NATE SZARMACH

Innocent Until Proven Guilty; A Study on William Adolphe Bouguereau II 2022

Acrylic, gesso, Oil, pigment, Dye, Varnish, Oil pastel, Colored pencil, graphite, Galkyde, Liquin Gel, Cold press wax

25 x 20 "



NATE SZARMACH

Proof Is In The Pudding; A Study On Caravaggio III 2022

Acrylic, gesso, Oil, pigment, Dye, Varnish, Oil pastel, Colored pencil, graphite, Galkyde, Liquin Gel, Cold press wax

30 x 48 "



NATE SZARMACH

New Morning; A Study On William Adolphe Bouguereau, 2022

Acrylic, Oil, pigment, Dye, Varnish, Oil pastel, Colored pencil, graphite, Galkyde, Liquin Gel
25 x 20 "



NATE SZARMACH

Found & Lost; a study on Carravagio, 2022

Acrylic, Oil, pigment, Dye, Varnish, Oil pastel, Colored pencil, graphite, Galkyde, Liquin Gel
25 x 20 "



NATE SZARMACH

Reverential Treatment, 2022

Acrylic, gesso, Oil, pigment, Dye, Varnish, Oil pastel, Colored pencil, graphite, Galkyde,
Liquin Gel, Cold press wax

45 x 36 "



NATE SZARMACH
Carravagio I, 2022
Acrylic, Modeling paste, and Varnish on Board
25 x 20 "



NATE SZARMACH

Titian I, 2022

Acrylic, Modeling paste, and Varnish on Board

25 x 20 "



NATE SZARMACH

William Adolphe Bouguereau I, 2022`

Acrylic, Modeling paste, and Varnish on Board

25 x 20 "



NATE SZARMACH

William Adolphe Bouguereau II, 2022

Acrylic, Modeling paste, and Varnish on Board

25 x 20 "

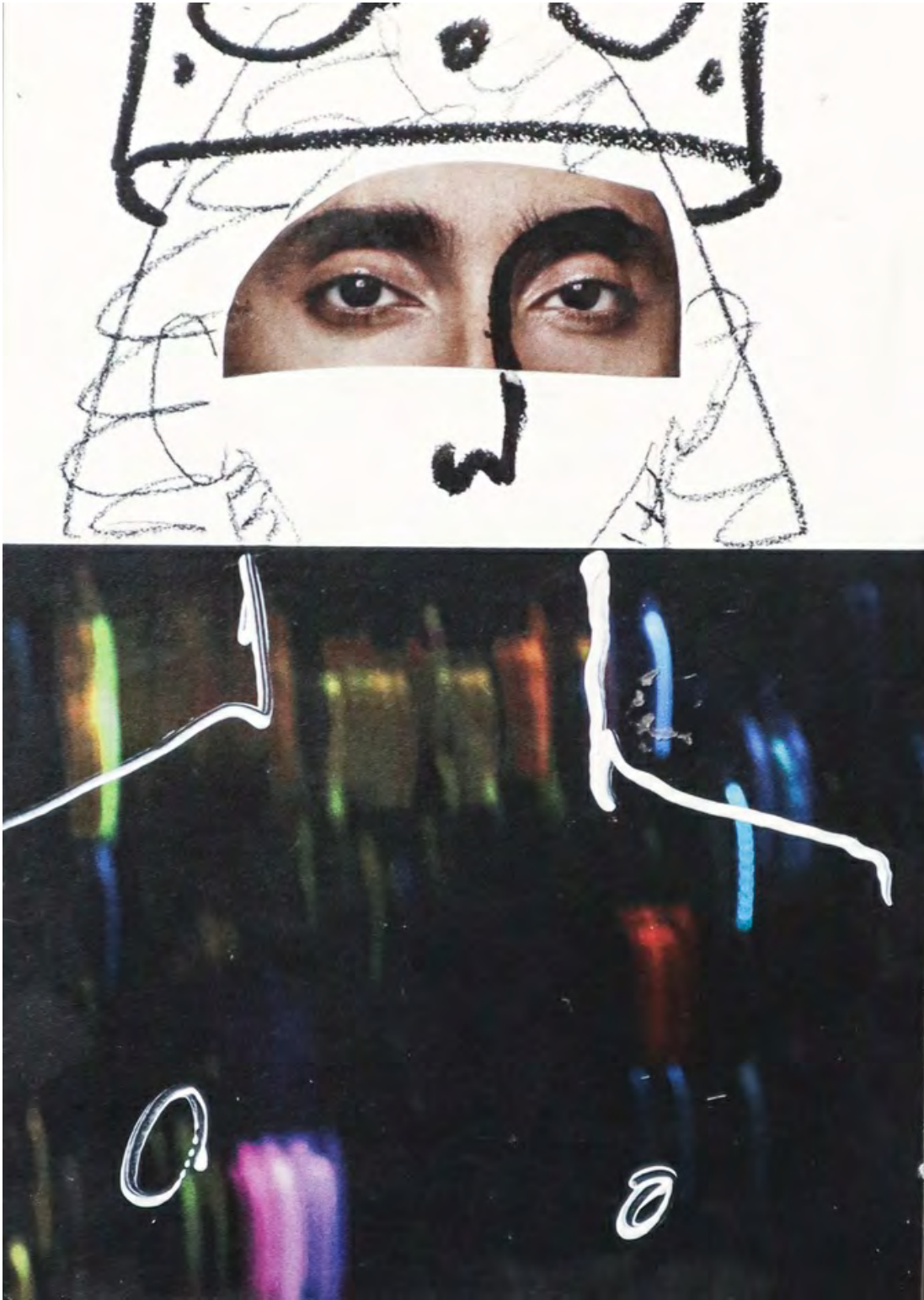


NATE SZARMACH

Rembrandt, 2022

Acrylic, Modeling paste, and Varnish on Board

25 x 22 "



NATE SZARMACH

His Eyes, 2022

Mixed Media Collage on Panel

7 x 5"

Framed: 10 x 8"



NATE SZARMACH
Hard Bodies, 2022
Mixed Media Collage on Panel
7 x 5 "
Framed: 10 x 8 "



NATE SZARMACH
Doubting Tommy, 2022
Mixed Media Collage on Panel
7 x 5"
Framed: 10 x 8"



NATE SZARMACH

Time for a New King, 2022

Mixed

7 x 5 "

Framed: 10 x 8 "



NATE SZARMACH

Mary in Tears, 2022

Mixed Media Collage on Panel

7 x 5"

Framed: 10 x 8"



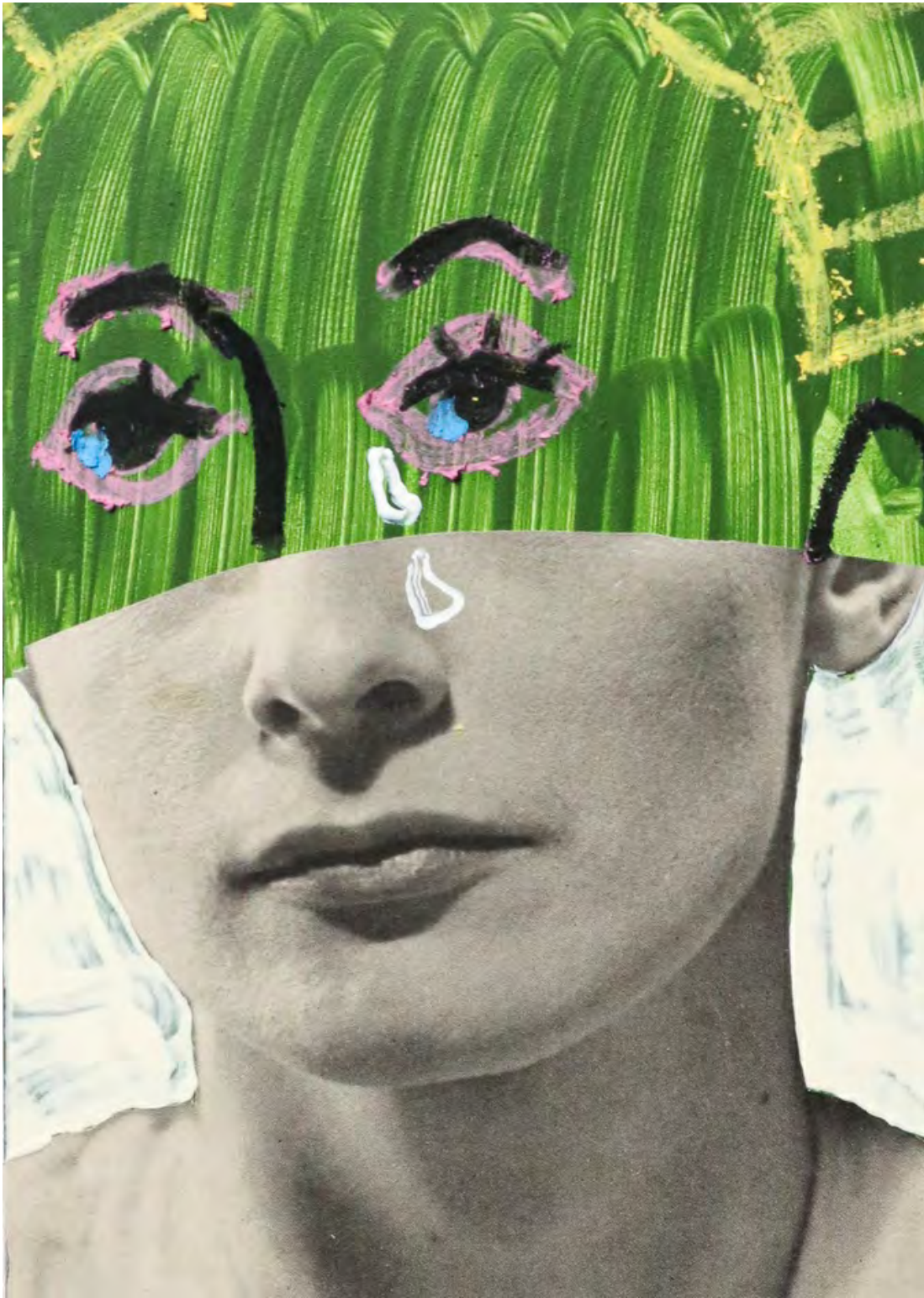
NATE SZARMACH

Beautiful King, 2022

Mixed Media Collage on Panel

7 x 5"

Framed: 10 x 8"



NATE SZARMACH
Martha in Tears, 2022
Mixed Media Collage on Panel
7 x 5 "
Framed: 10 x 8 "



NATE SZARMACH

Horizons, 2022

Mixed Media Collage on Panel

7 x 5 "

Framed: 10 x 8 "